

TEXPRO®

# ASH PLUS 高温气液染色机

ASH PLUS AIR & LIQUID FLOW DYEING MACHINE

# ASH PLUS 高温气液染色机

## ASH PLUS AIR & LIQUID FLOW DYEING MACHINE

ASH PLUS 系列是由三技精密技术独立自主研发的低能耗染色机。该系列染色机集气流和液流染色机的优势为一体，并衍生出自身的独特性能。采用气、液分离设计原理，提高了织物匀染性和抗折皱性，染色一次成功率高，水洗效率高。除可满足常规织物的前处理、染色、染色后水洗流程外，更适用于敏感色、紧密度高和高弹力面料的染色，比纯气流染色机节电，比纯液流染色机的适用范围更广。

ASH Plus Series Multiflow HT dyeing machine is Texpro's high end technology solution, combining the advantages of air and liquid flow systems to reach outstanding performance at lowest operating cost.

The system uses separate liquid nozzles for liquor distribution and washing processes and an air nozzle for fabric opening and transportation to enable crease free processing with lowest utility consumption and improved fabric handle.

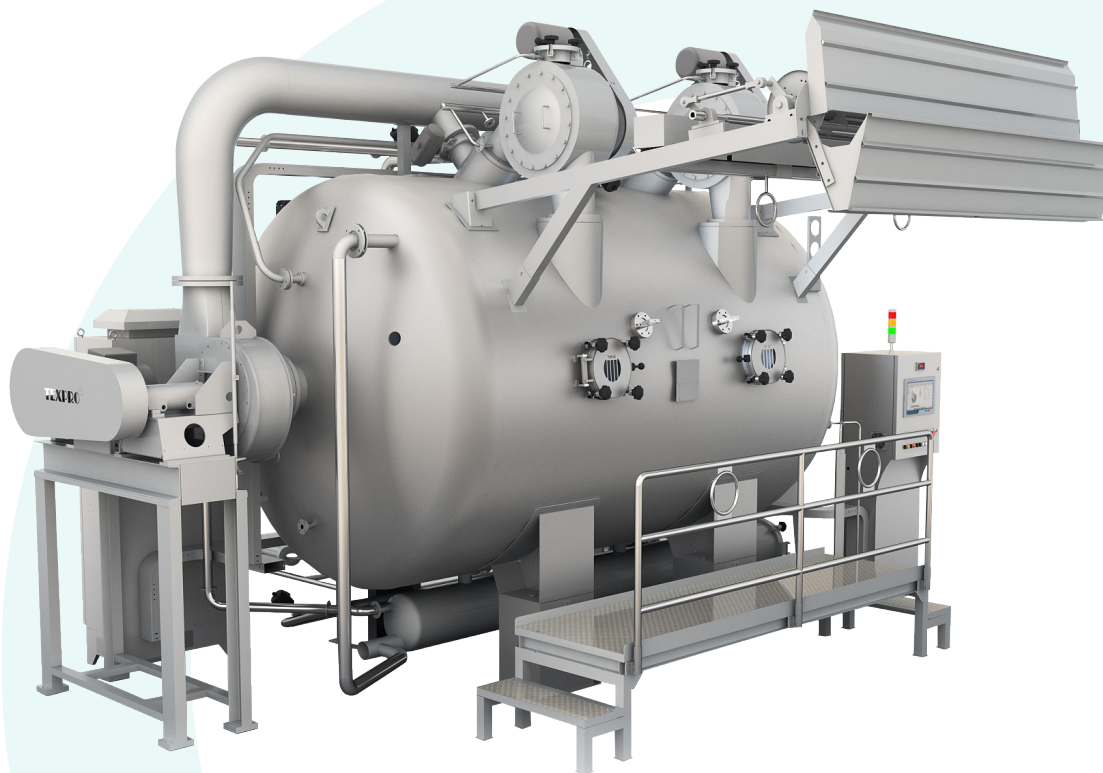
The Multiflow technology guarantees lowest liquor ratio on a very broad range of qualities including knitted fabrics in circular and open width form, woven fabrics with high density and high weight, cotton and synthetics with elasthane to name a few.

ASH PLUS	1T	2T	3T	4T	6T	8T
喷嘴数量 Number Of Nozzles	1	2	3	4	6	8
载量 Capacity (kg)	300-350	600-700	900-1050	1200-1400	1800-2100	2400-2800
尺寸 Size 长L*宽W*高H(mm)	4900*5530*3860	6750*5480*3860	8705*5810*3860	10200*6065*3885	13670*6415*3920	16920*6655*3885

ASH M	25	50	75	100	150	200
载量 Capacity (kg)	20-30	40-50	60-75	80-100	110-150	160-200
尺寸 Size 长L*宽W*高H(mm)	2320*3710*2700	2780*4710*2970	2845*4710*2970	2915*4710*2970	3000*4710*2970	3485*5380*3715

如有需求特殊载量，详情请咨询我司营业顾问

If any special request for loading capacity, please contact our sales team for details.



缸体所有和染液直接接触的不锈钢板材均采用 S31603/SUS316L/SUS316Ti 高度抗腐蚀不锈钢制造。

All stainless steel plates in touch with the dyeing liquid in the machine body are made of S31603 / SUS316L / SUS316Ti highly corrosion resistant stainless steel.

## 设备特点

### SALIENT FEATURE



#### 中小样气液染色解决方案

Airflow and liquid flow separation technology with multiple nozzle combination, Liquid nozzles for dyeing and washing. Separate air nozzle for fabric opening and transportation.



#### 组合式染液喷嘴

Multiflow system, superior to aerodynamic system.



#### 非雾化

Dual dilution mixing system with bypass circulation for improved levelness of dyeing.



#### 适用于染敏感色，抗褶皱性好

Intelligent piping design with integrated filter actively reducing liquor content in the circulation system and keeping liquor ratio stable, even when loading capacity is not utilized fully.

## 布料类型

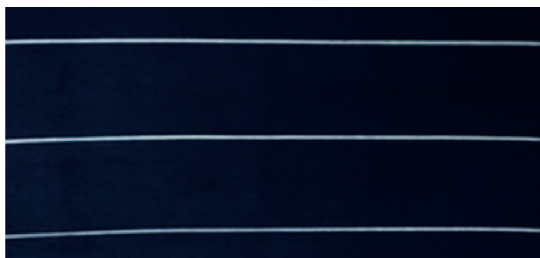
### FABRIC TYPES

在特定的行机条件下，部分典型的适染布种

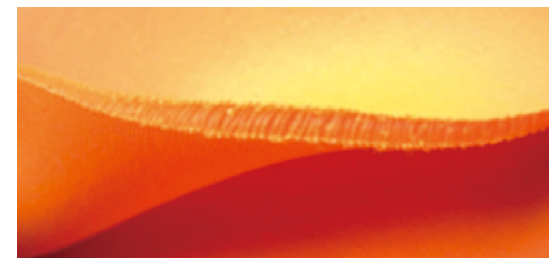
The ASH Plus is suitable for a wide range of knitted and woven fabrics. Due to its high versatility, it is particularly recommended for synthetic or cellulose fiber blends in knitted and warp-knitted fabrics.



机织布 Woven Fabric



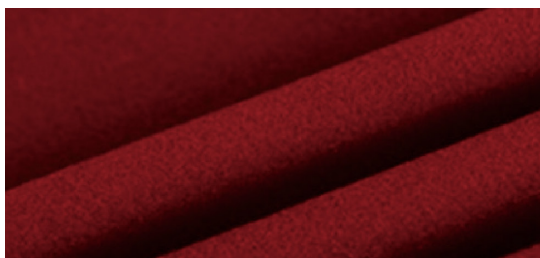
扁机领布 Flat-Knit Collar Fabric



空气层布 Scuba Knitting Fabric



卫衣布 French Terry Fabric



罗马布 Ponte-De-Roma Fabric



超柔布 Ultra-Soft Fabric

以上参数仅供参考

Above information is a selection of fabrics suitable for processing on ASH plus air & liquid flow dyeing machine. This selection is for reference only. Please contact our representative for a comprehensive list of fabrics.

本说明书中参数、图片仅供参考，本公司保留最终的修改权利而不再另行通知。

The parameters & pictures shown in this catalogue are only for your reference. We reserve the right to modify technologies without prior notice.

---

电话 (Tel): +86 757 8802 0263 / +86 757 8830 3380

邮箱 (E-mail): sales@texpro-group.com

网站 (Web): www.texpro-group.com



---

三技精密技术 (广东) 股份有限公司

TEXPRO PRECISION TECHNOLOGY (GUANGDONG) CO., LTD

地址 : 广东省佛山市禅城区华宝南路 1 号

Add: No.1, South Huabao Road, Chancheng District, Foshan,  
Guangdong, China.

---

广东三技克朗茨机械科技有限公司

TEXPRO & STENTEX MACHINERY TECHNOLOGY CO., LTD.

地址 : 广东省佛山市三水区中心科技工业区大塘园 A 区 69-2 号

Add: No.69-2, Area A, Datang Park, Central Technology Industrial  
Zone, Sanshui District, Foshan, Guangdong, China.